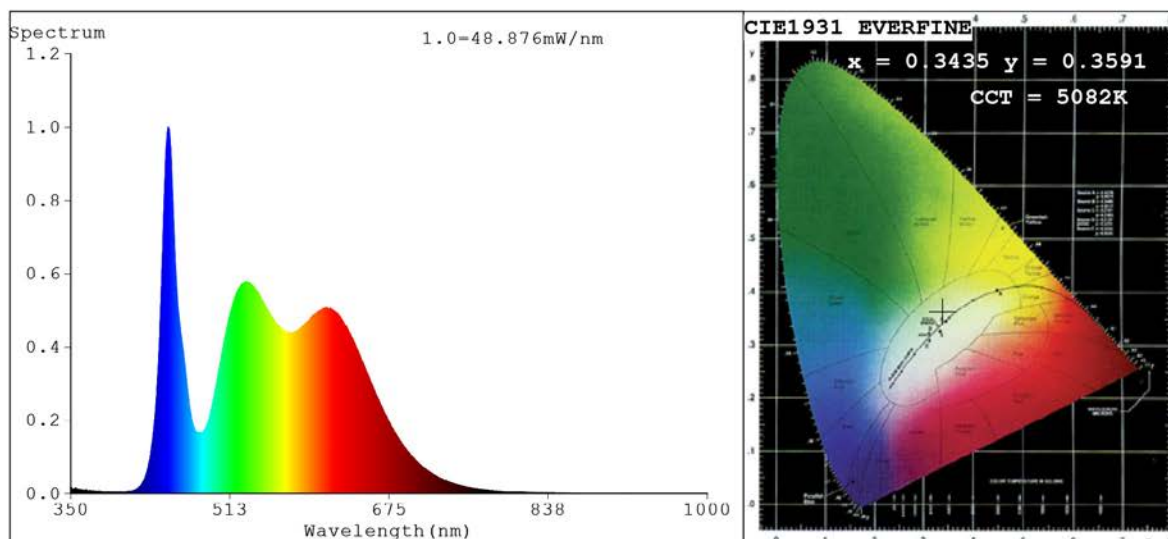


Spectrum Test Report



Color Parameters:

Chromaticity Coordinate: $x=0.3435$ $y=0.3591$ $u'=0.2075$ $v'=0.4881$
 $CCT=5082K$ ($Duv=0.0044$) Dominant WL: $\lambda_d = 567.6nm$ Purity=10.8%
 Ratio: R=17.2% G=78.7% B=4.0%; Peak WL: $\lambda_p = 449.5nm$ FWHM=18.2nm
 Render Index: $R_a=90.3$ CRI=85.6 TM30: $R_f=89$ $R_g=101$
 R1 =94 R2 =90 R3 =86 R4 =91 R5 =92 R6 =87 R7 =93
 R8 =89 R9 =64 R10=76 R11=89 R12=64 R13=93 R14=91 R15=91

Photo Parameters:

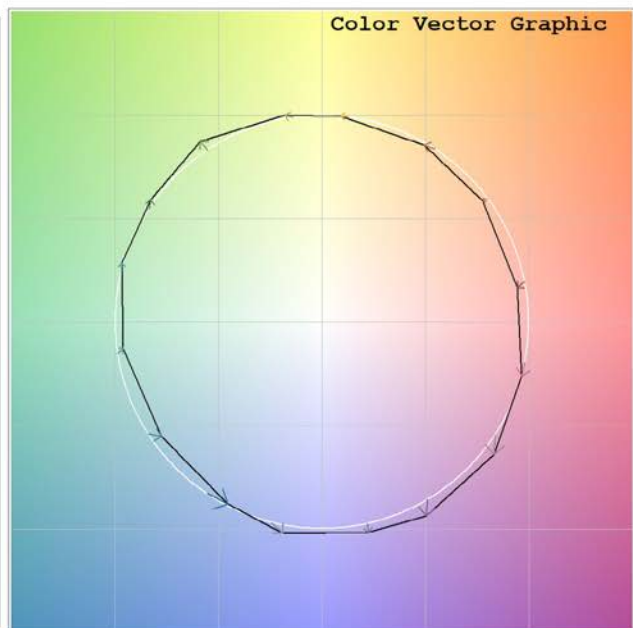
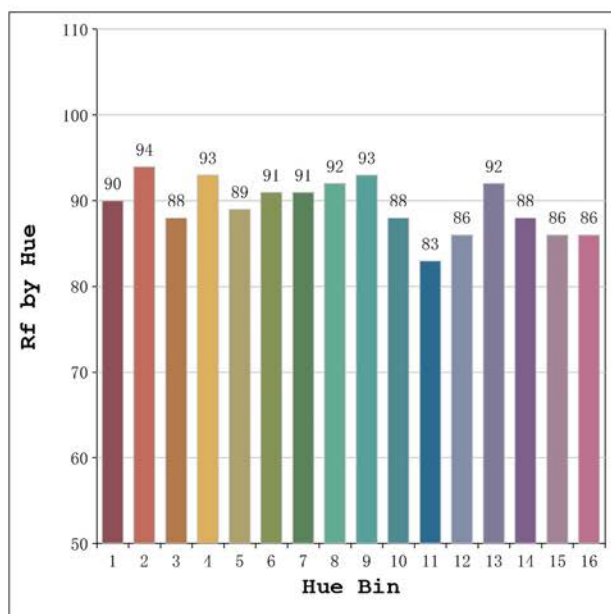
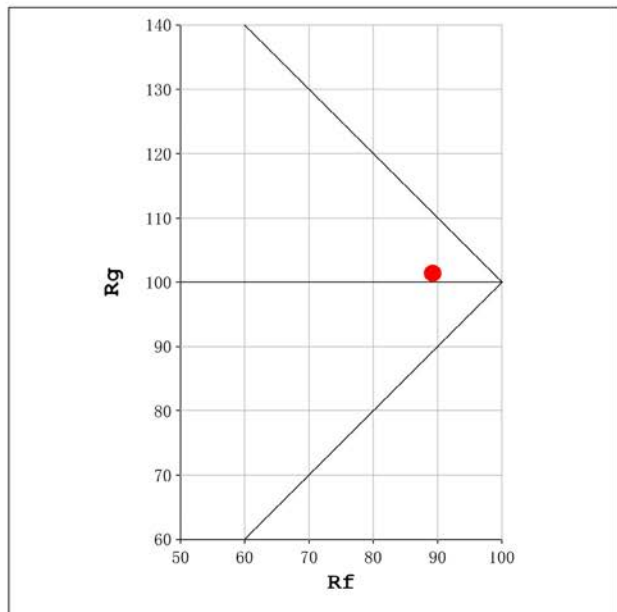
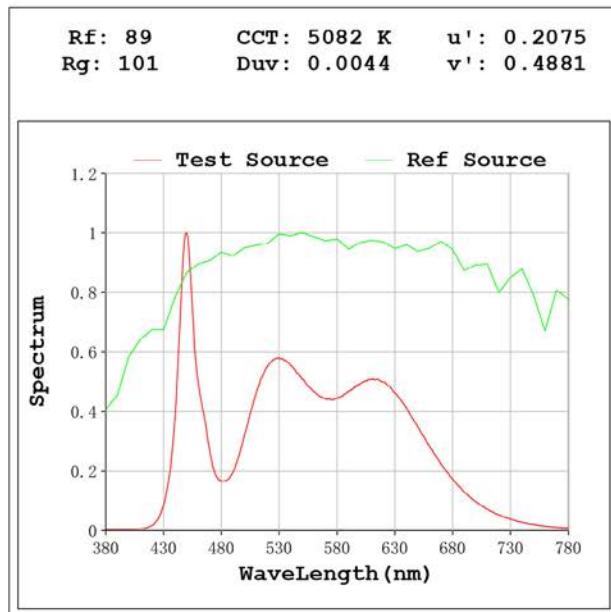
Flux = 1684 lm Eff. : 111.17 lm/W Φ_e = 5.514 W

Electrical parameters:

V = 23.998 V I = 0.6313 A P = 15.15 W PF = 1.000

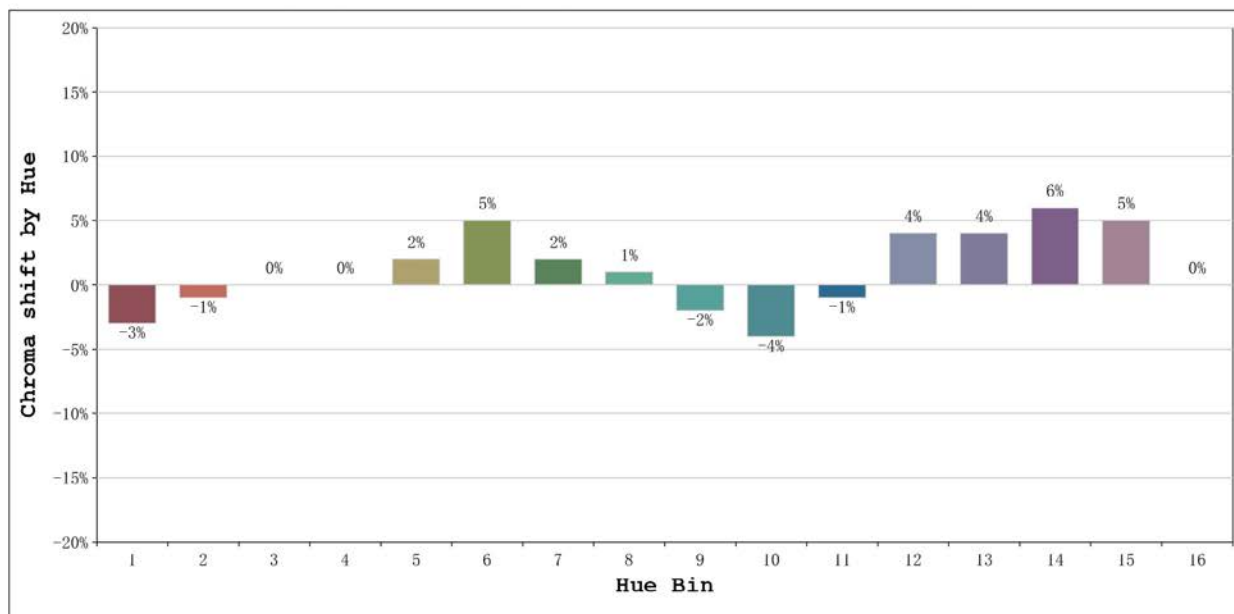
Status: Integral T = 831 ms I_p = 50920 (78%)

Model: Ecoled Élite 15 Gold 5000	Number: 31.175
Tester: Sergio Carneros	Date: 2025-02-12 15:12:10
Temperature: 20Deg	Humidity: 50%
Manufacturer: Luz Negra	Remarks: 100cm de tira flexible



Model:Ecoled Élite 15 Gold 5000
 Tester:Sergio Carneros
 Temperature:20Deg
 Manufacturer:Luz Negra

Number: 31.175
 Date:2025-02-12 15:12:10
 Humidity:50%
 Remarks:100cm de tira flexible



			Graphic shift(%)	
Hue Bin	Hue Angle	Rf	Chroma	Hue
1	0.0° - 22.5°	90	-3	-1
2	22.5° - 45.0°	94	-1	0
3	45.0° - 67.5°	88	0	5
4	67.5° - 90.0°	93	0	4
5	90.0° - 112.5°	89	2	4
6	112.5° - 135.0°	91	5	1
7	135.0° - 157.5°	91	2	-3
8	157.5° - 180.0°	92	1	-3
9	180.0° - 202.5°	93	-2	-1
10	202.5° - 225.0°	88	-4	4
11	225.0° - 247.5°	83	-1	11
12	247.5° - 270.0°	86	4	6
13	270.0° - 292.5°	92	4	0
14	292.5° - 315.0°	88	6	-4
15	315.0° - 337.5°	86	5	-7
16	337.5° - 360.0°	86	0	-6

Model:Ecoled Élite 15 Gold 5000 Number: 31.175
 Tester:Sergio Carneros Date:2025-02-12 15:12:10
 Temperature:20Deg Humidity:50%
 Manufacturer:Luz Negra Remarks:100cm de tira flexible